

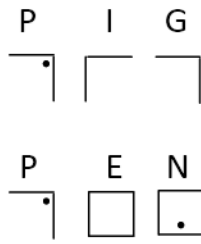
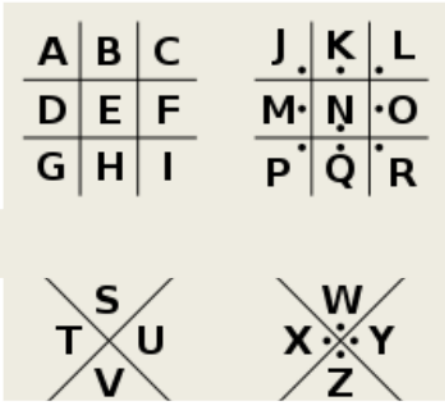
Clue 1 – Place Value

A series of numbers were found with a grid.

Number	Letter	Number	Letter
65223.4	t	5431	i
965674.34	h	548793.48	s
4518.73	e	953.26	f
51764.83	k	500.73	e
5431.6	i	43.57	m
4851.34	l	549376.21	a
954.3	l	7951.34	l
954.136	e	1524.93	e
65274.34	r	1524.39	.

5↓ 3→	hundred	ten	unit	tenth	hundredth
Hundred thousand	A	J	S	C	N
Ten thousand	O	B	D	R	K
Thousand	P	I	T	H	Y
Hundred	-	V	U	.	E
Ten	Q	-	F	L	Z
Unit		,	-	W	G
tenth			M	-	X

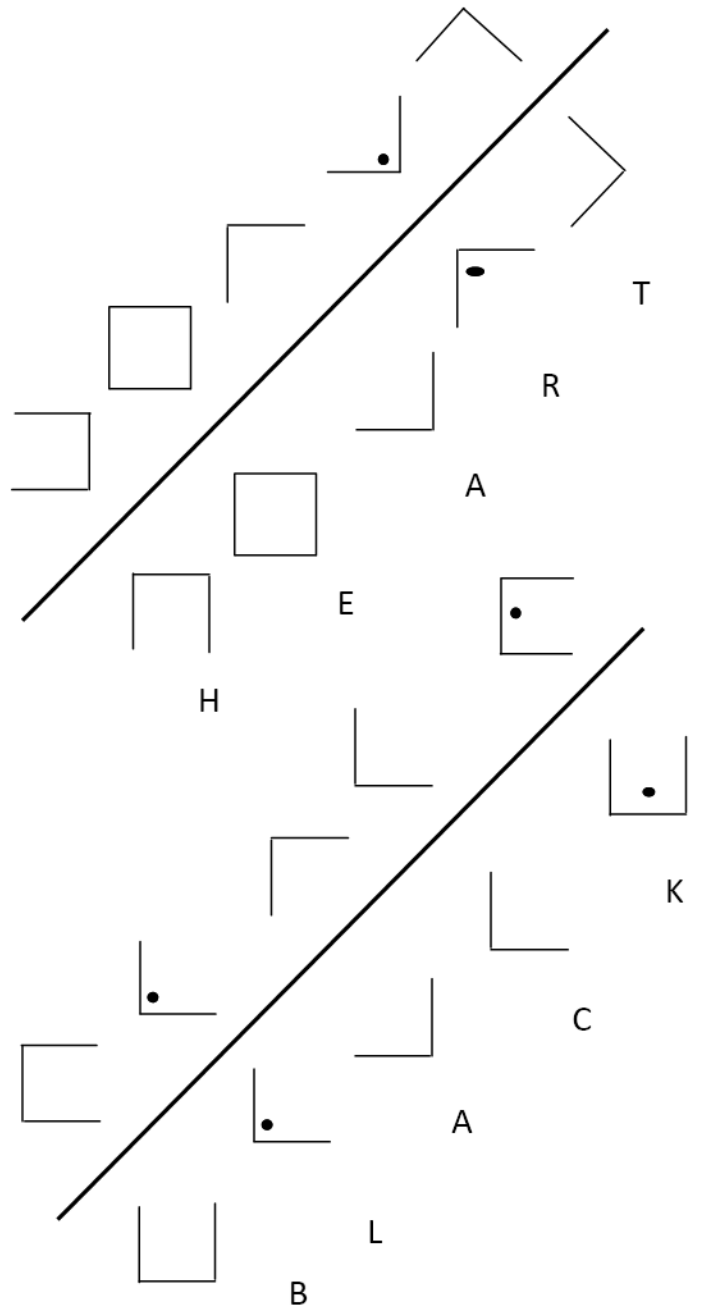
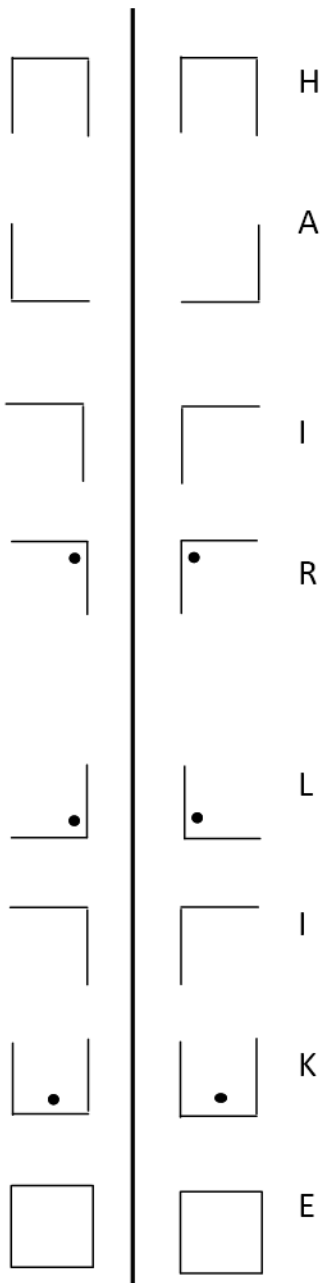
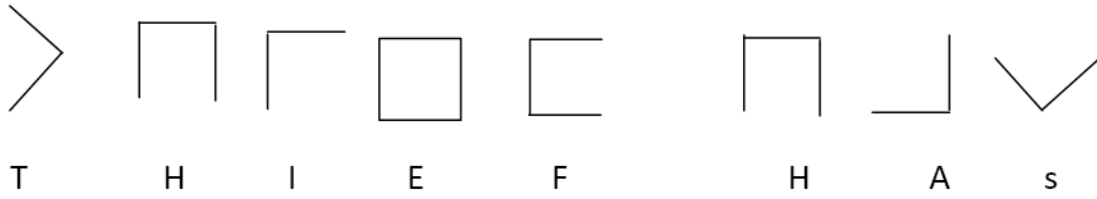
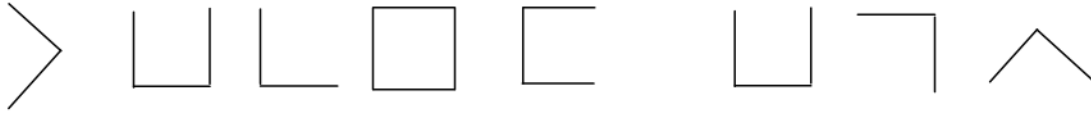
Clue 2—Turning the case around



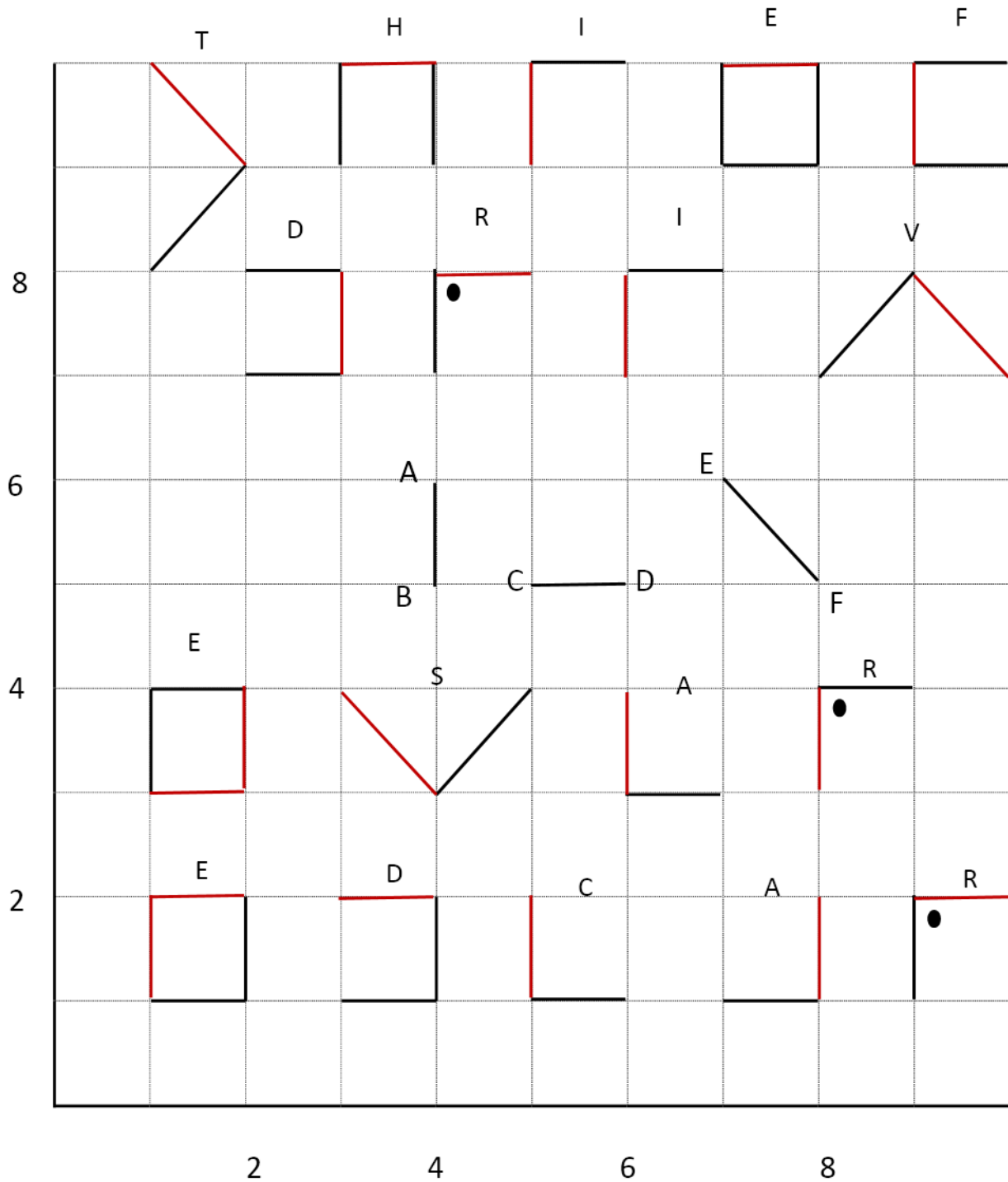
Rotation

Shape	Direction	How much	New shape	Letter
	clockwise	180°		C
	Anti-clockwise	90°		R
	clockwise	90°		I
	clockwise	90°		M
	Anti-clockwise	90°		I
	Anti-clockwise	360°		N
	clockwise	180°		A
	anticlockwise	180°		L
	clockwise	135°		W
	Anti-clockwise	90°		O
	Anti-clockwise	90°		R
	clockwise	180°		K
	clockwise	135°		S
	clockwise	270°		O
	clockwise	180°		N
	clockwise	90°		A
	clockwise	45°		T
	Anti-clockwise	90°		I
	clockwise	180°		L
	Anti-clockwise	270°		L

Clue 3—Something to reflect on!



Clue 4 – Lost in translation.



“This looks like pig pen again but it doesn’t make sense,” said Smithkins.
 “It looks like we have to do some translation first,” observed the Inspector,
 reading the instructions.
 “I did a little French at school – will that help?” enquired Smithkins.

Clue 5—Time is of the essence

Smithkins was wondering if it was lunch. He had forgotten his watch and felt embarrassed to ask the time. He wandered over to the Homeware department and looked at the clocks. To his surprise, none of them showed the right time. The batteries had been removed from every clock. They were lined up in a row. This is a diagram showing the clocks.

The Inspector was intrigued to hear of this and quickly concluded that it was a clue. After a long think, he decided that it was the minute hand which gave the clue. It was the old a = 1, b = 2 etc.

“But what about the fourth clock—9:55? There is no 55th letter in the alphabet,” observed Smithkins.

“How many minutes is it to the next hour?” asked the Inspector.

