

Partitioning and Doubling

2 1	
20	1
40	2
42	

Choose to start in column A or B. If you choose A and it is not challenging enough move to B. If you choose B and you are finding it too challenging, move to A.



4 4	

2 5	

7 9	

9 7	

1 7	

4 7	

1	2	7

2	3	8

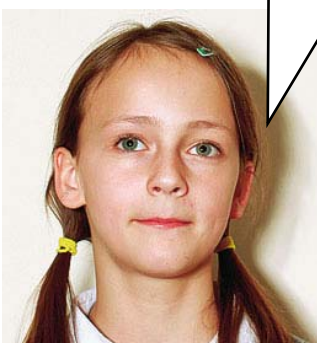
65	

98	

3	4	9

4	8	8

If I have to multiple a number by 8, I can just double, double and double again.



Simone thinks that she can double a number, then double it, and double again and it is the same as multiplying it by 8. Is she correct? Yes/No

Explain the reason for your answer: