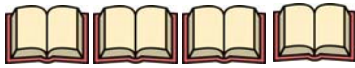

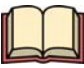




Handling Data Questions 1

Look at the following graph and answer the questions below.

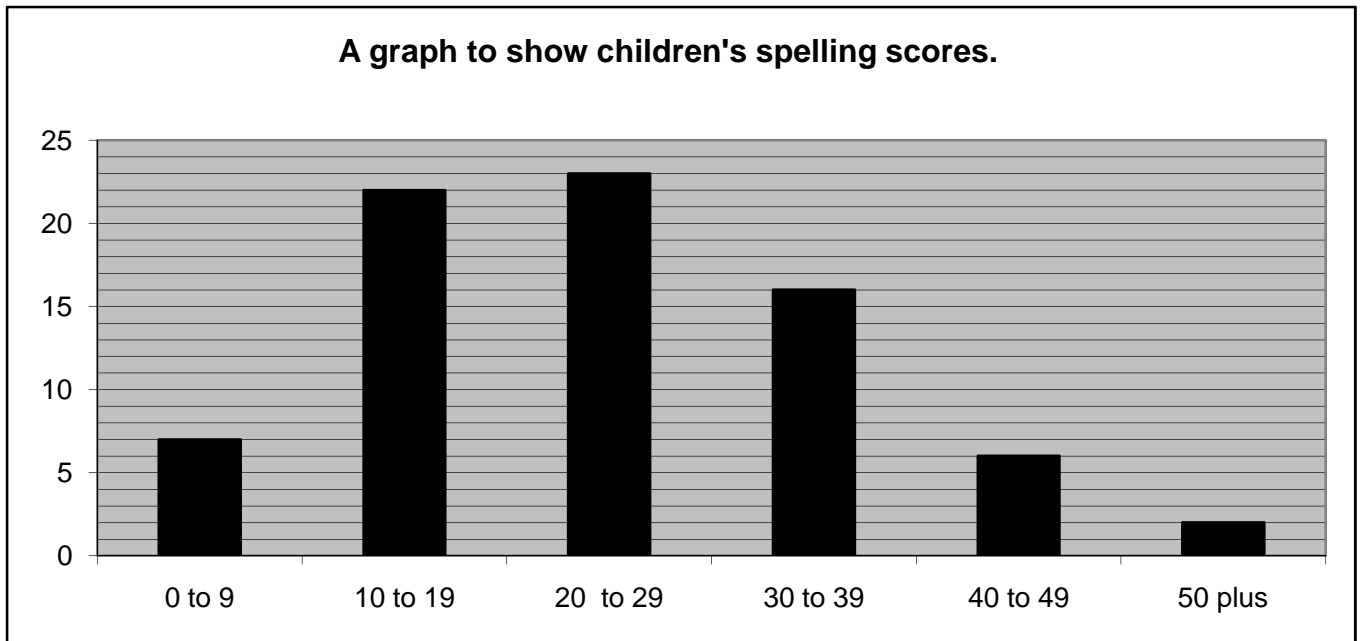
Each  represents 2 books

Name	Books Read
Anna	
Max	
Sam	
Jane	
Jim	

- 1) How many books did Anna read?
- 2) How many books did Max read?
- 3) Who read the most number of books?
- 4) Who read the least number of books?
- 5) How many more books did Jane read than Jim?
- 6) How many more books did Anna read than Sam?
- 7) How many more books would Jim need to read so he read the same as Max?
- 8) How many more books would Anna need to read so she read the same as Jane?
- 9) Sam read 3 more books, make the graph show the new number of books that Sam has read.
- 10) Jim read 5 more books, make the graph show the new number of books that Jim has read.

Handling Data Questions 2

Look at the following graph and answer the questions below.



- 1) How many children got a spelling score between 0 and 9?
- 2) How many children got a spelling score between 40 and 49?
- 3) How many children got a spelling score between 20 and 29?
- 4) How many children got a spelling score between 10 and 29?
- 5) How many children got a spelling score of over 40?
- 6) How many children got a spelling score of under 19?
- 7) How many more children scored between 20 and 29 than 0 to 9?
- 8) How many more children scored between 30 to 39 than 40 to 49?
- 9) Which spelling score range is the most common?
- 10) How many children took part in the spelling test altogether?