

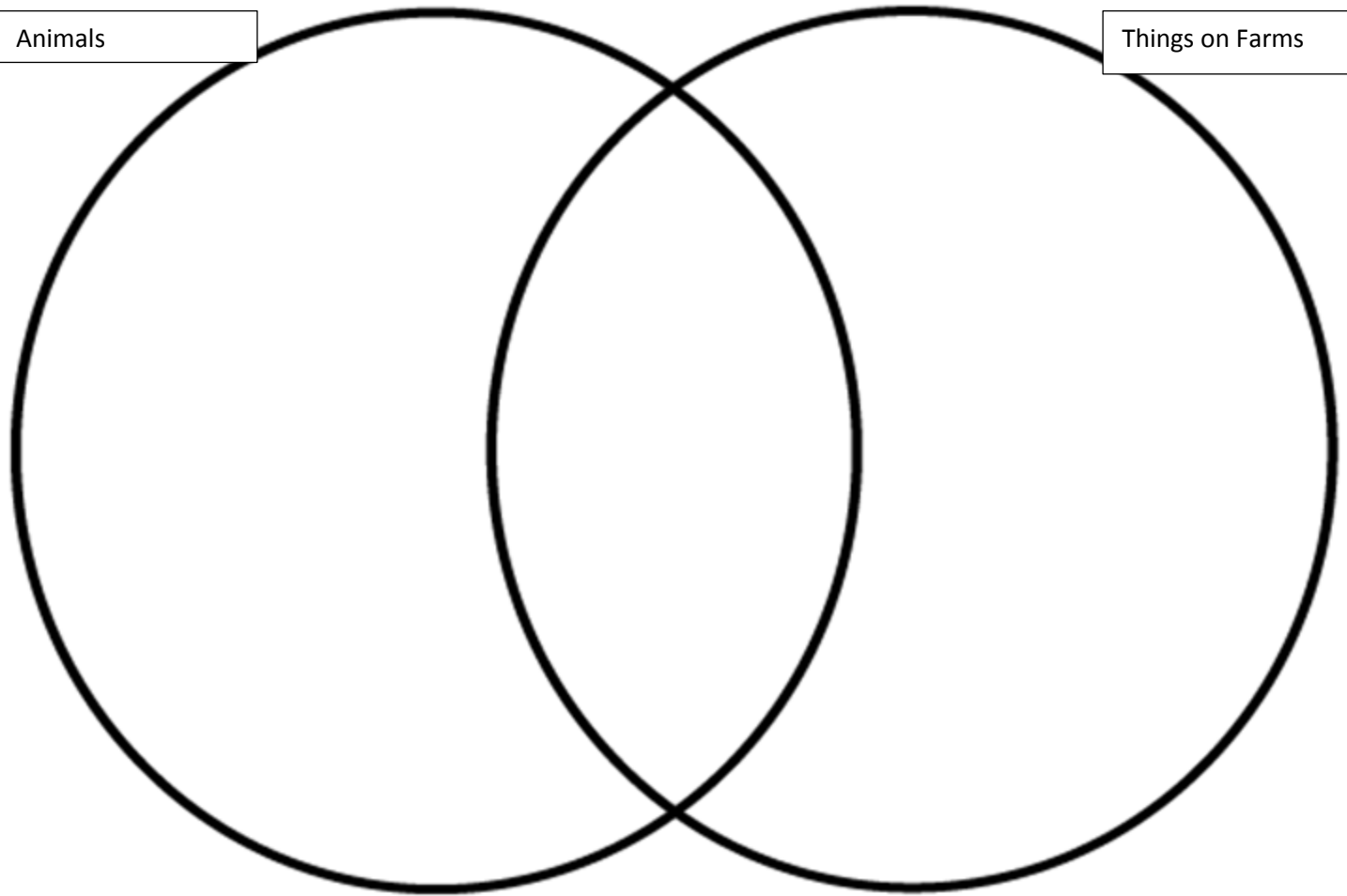
WALT use not when talking about objects we have sorted.

Name

Cut out the objects below and glue them in the correct place on the Venn Diagram

Animals

Things on Farms



Make three statements about your Venn Diagram- the first one is done for you

1. A cow is an animal that lives on a farm. A tractor is on a farm but is not an animal. A lion is an animal but does not live on a farm.

2.

3.

Cut these objects out and glue them in the right place on your Venn Diagram.



Tractor



Cow



Lion



Hay Bale



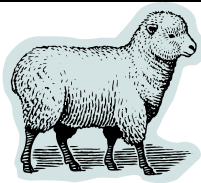
Gorilla



Camel



Parrot



Sheep



Barn



Fences

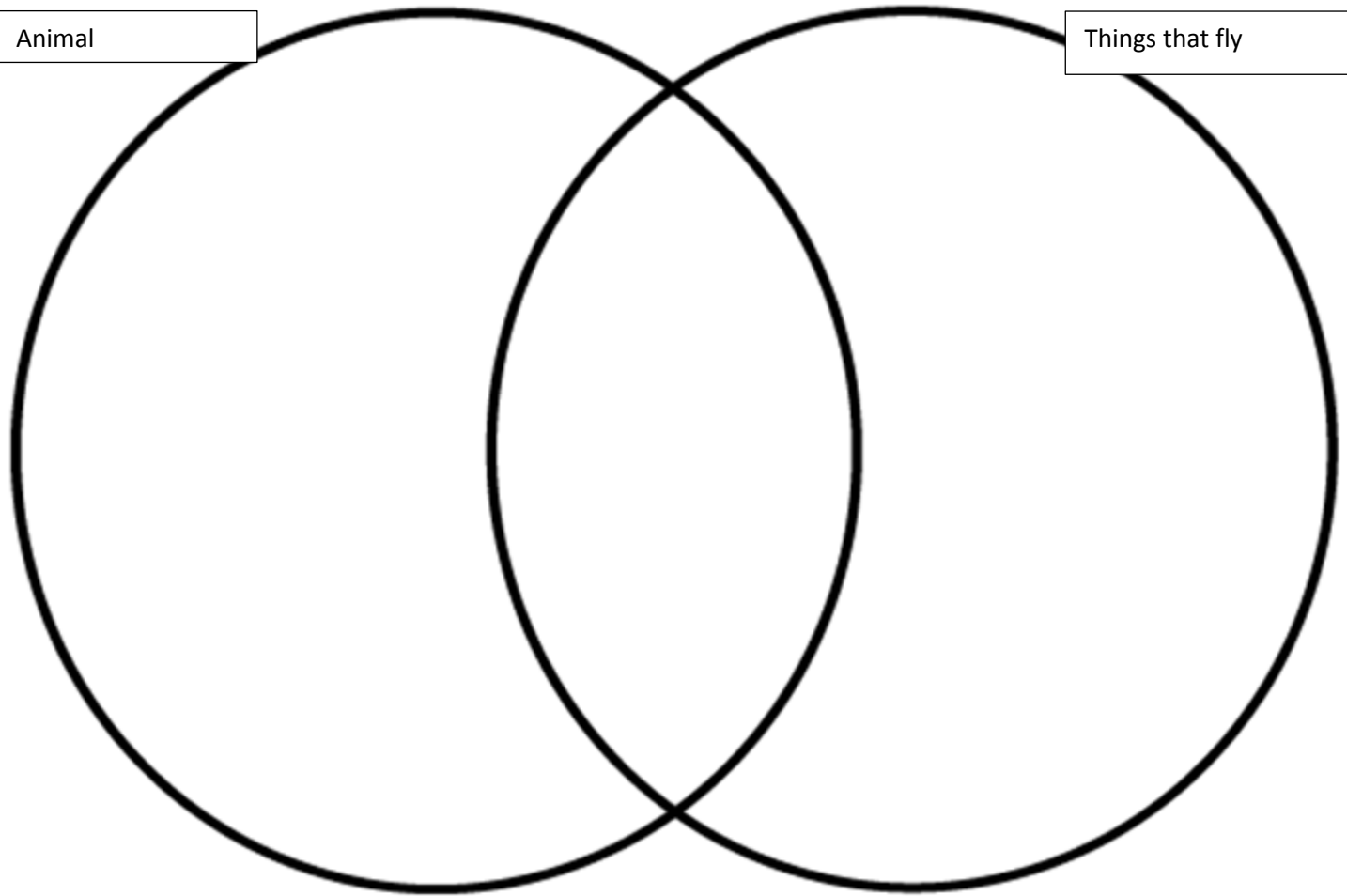
WALT use not when talking about objects we have sorted.

Name

Cut out the objects below and glue them in the correct place on the Venn Diagram

Animal

Things that fly



Make three statements about your Venn Diagram.

1.

2.

3.

Cut these objects out and glue them in the right place on your Venn Diagram.



Bear



Helicopter



Kite



Bat



Cat



Guinea Pig



Eagle



Bee



Aeroplane



Hot Air Balloon



Flying squirrel



Caterpillar



Zebra



Rocket



Fly

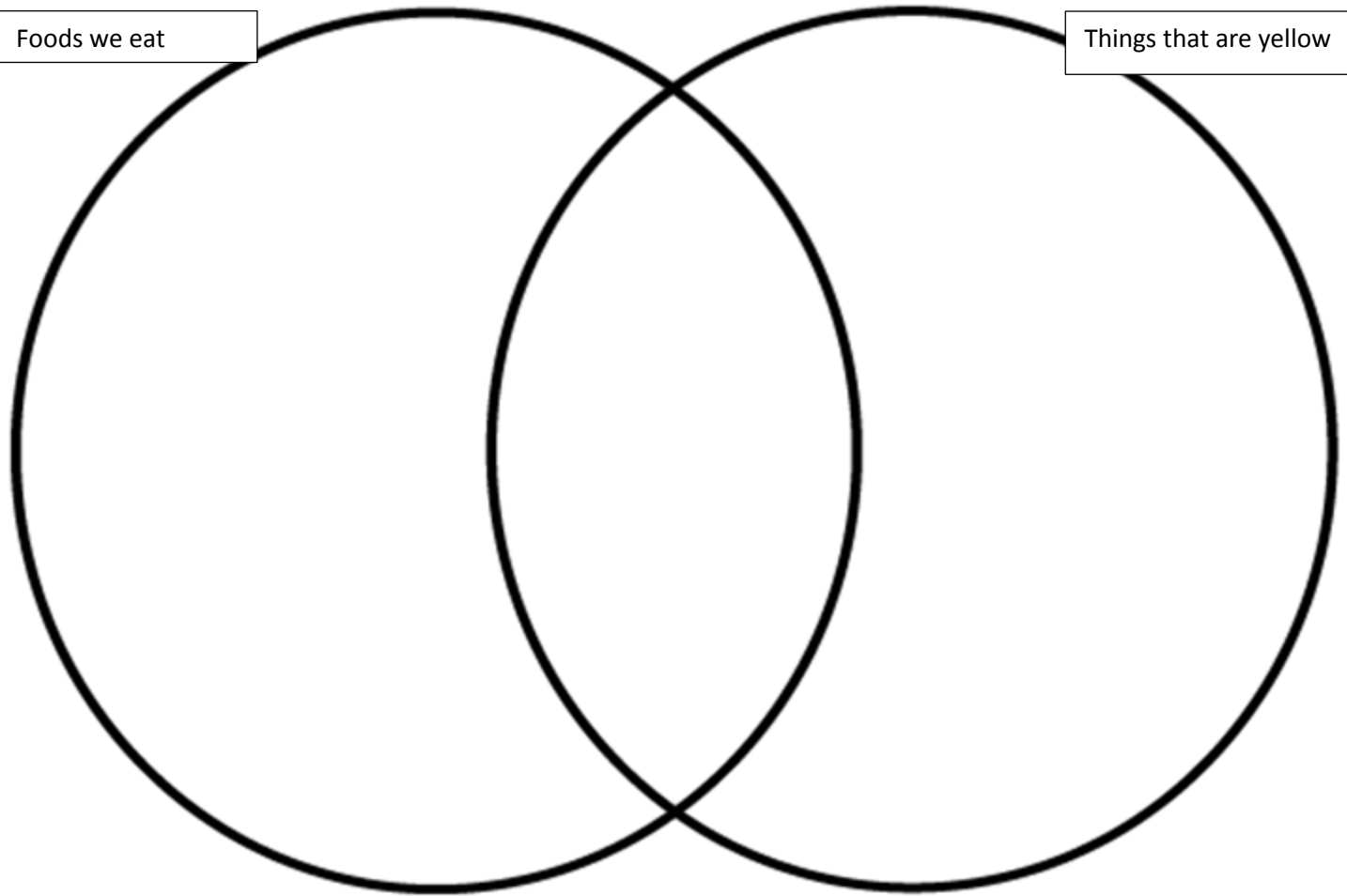
WALT use not when talking about objects we have sorted.

Name

Cut out the objects below and glue them in the correct place on the Venn Diagram

Foods we eat

Things that are yellow



Make three statements about your Venn Diagram- the first one is done for you

1. A banana is yellow and is something we eat. The sun is yellow but not something we eat. A strawberry is something we eat but is not yellow.

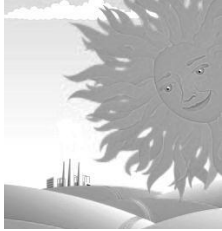
2.

3.

Cut these objects out and glue them in the right place on your Venn Diagram.



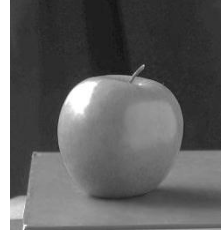
Banana



Sun



Strawberry



Apple



Pineapple



Sunflower



Cheese



Chick



Hard Hat



Peas

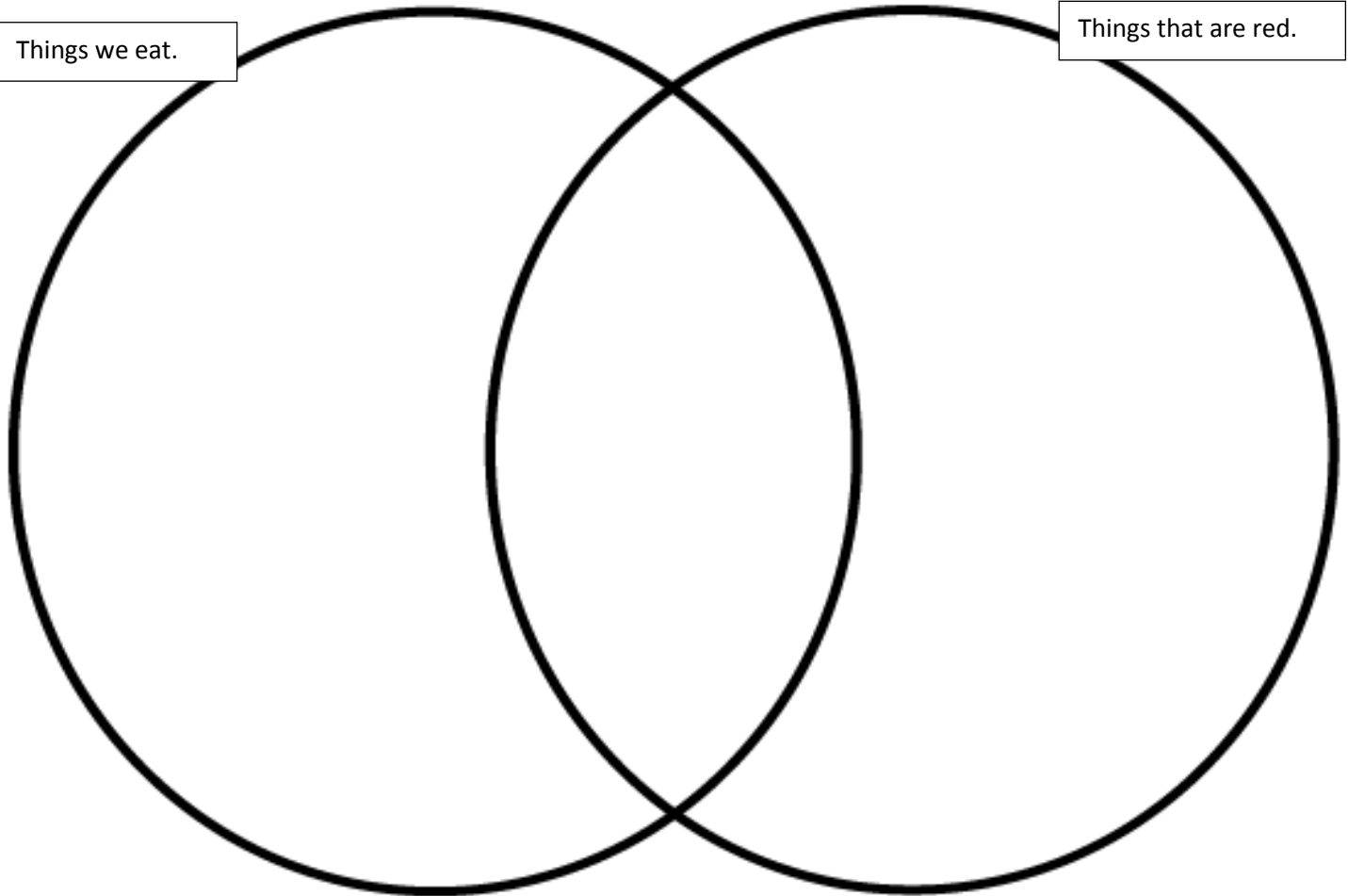
WALT use a Venn Diagram to sort objects using one rule.

Name: _____

Cut the objects out and glue them in the right place.

Things we eat.

Things that are red.



Write out the objects that are in the intersection:

Things we eat \cap Things that are red.

{ _____, _____, _____ }

