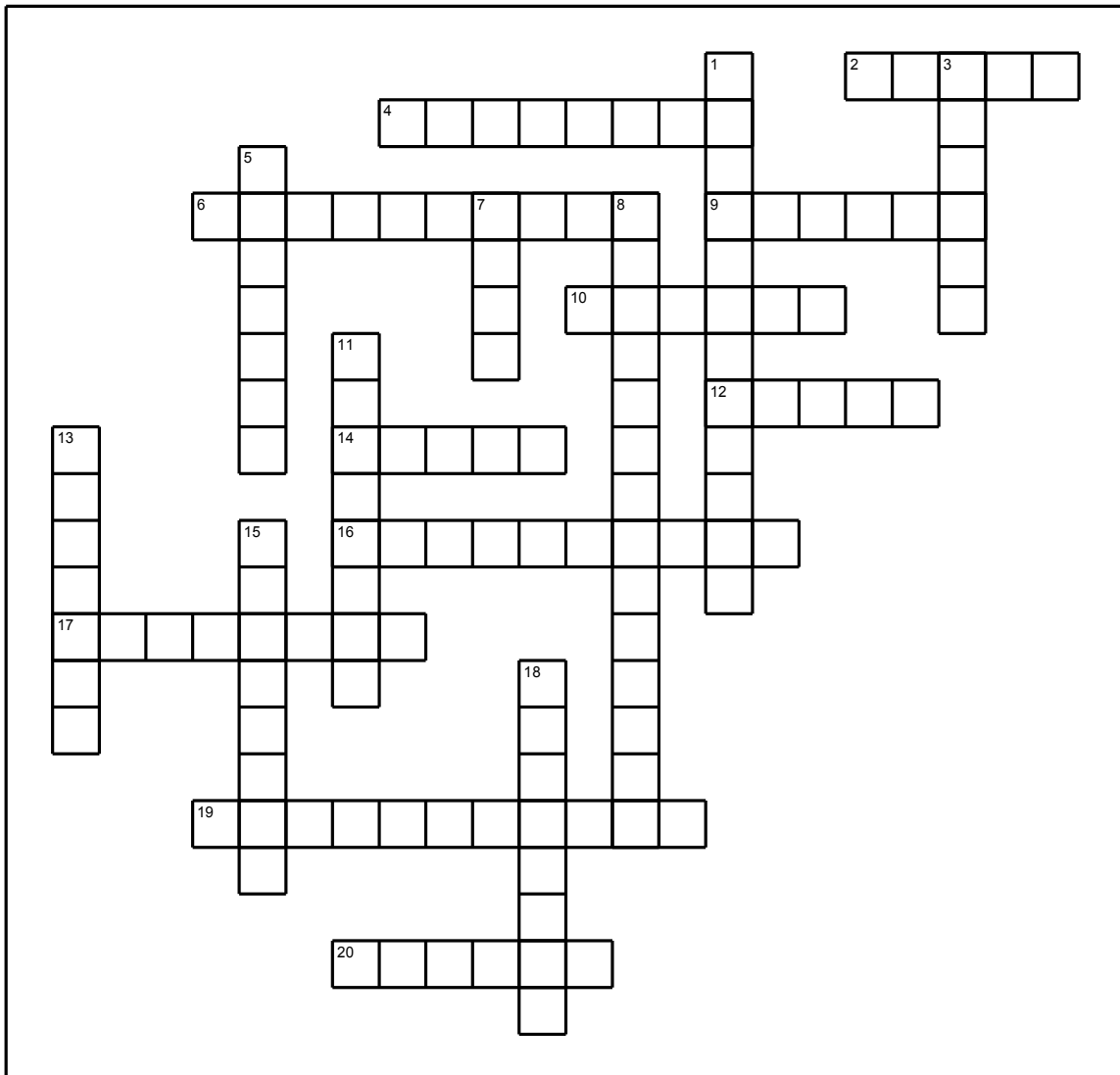


The Digestive System



Across

2. These cut and crush food in the mouth
4. Type of glands found in the mouth
6. The tube between the mouth and the stomach
9. The faeces is held here until it is excreted
10. Scientific name for poo
12. Produces bile and many enzymes
14. Water is absorbed from the waste food in this organ (5,9)
16. This stops food going down the windpipe
17. A dead end tube where the small and large intestines join; can become infected and be removed
19. This stores bile made by the liver (4,7)
20. Can detect some poisons - the organ of taste

Down

1. Type of acid found in the stomach
3. The hard outer layer of teeth
5. The softer substance found inside teeth
7. At the end of the rectum, this controls when waste food is excreted
8. 6m in humans - where most nutrients are absorbed into the blood stream (5,9)
11. There are more of these in your digestive tract than there are people on this earth
13. A bag like organ - in adults 25cm long which can hold 1 litre of food
15. Produces insulin which controls sugar in the blood
18. The first section of the small intestine - about 30cm long

The Digestive System



stomach

rectum

anus

oesophagus

salivary

liver

pancreas

hydrochloric

tongue

teeth

faeces

gall bladder

colon

small intestine

appendix

enamel

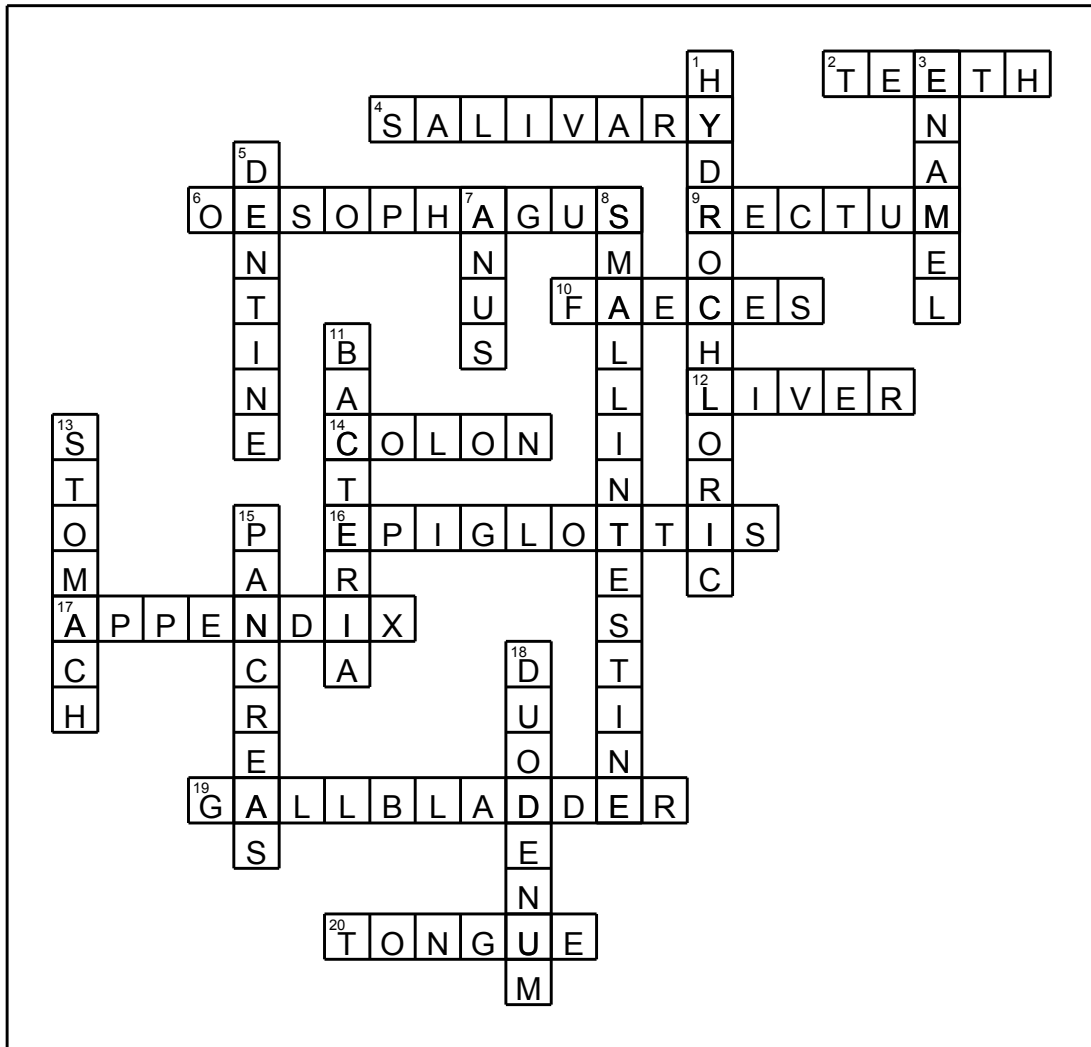
dentine

bacteria

epiglottis

duodenum

The Digestive System



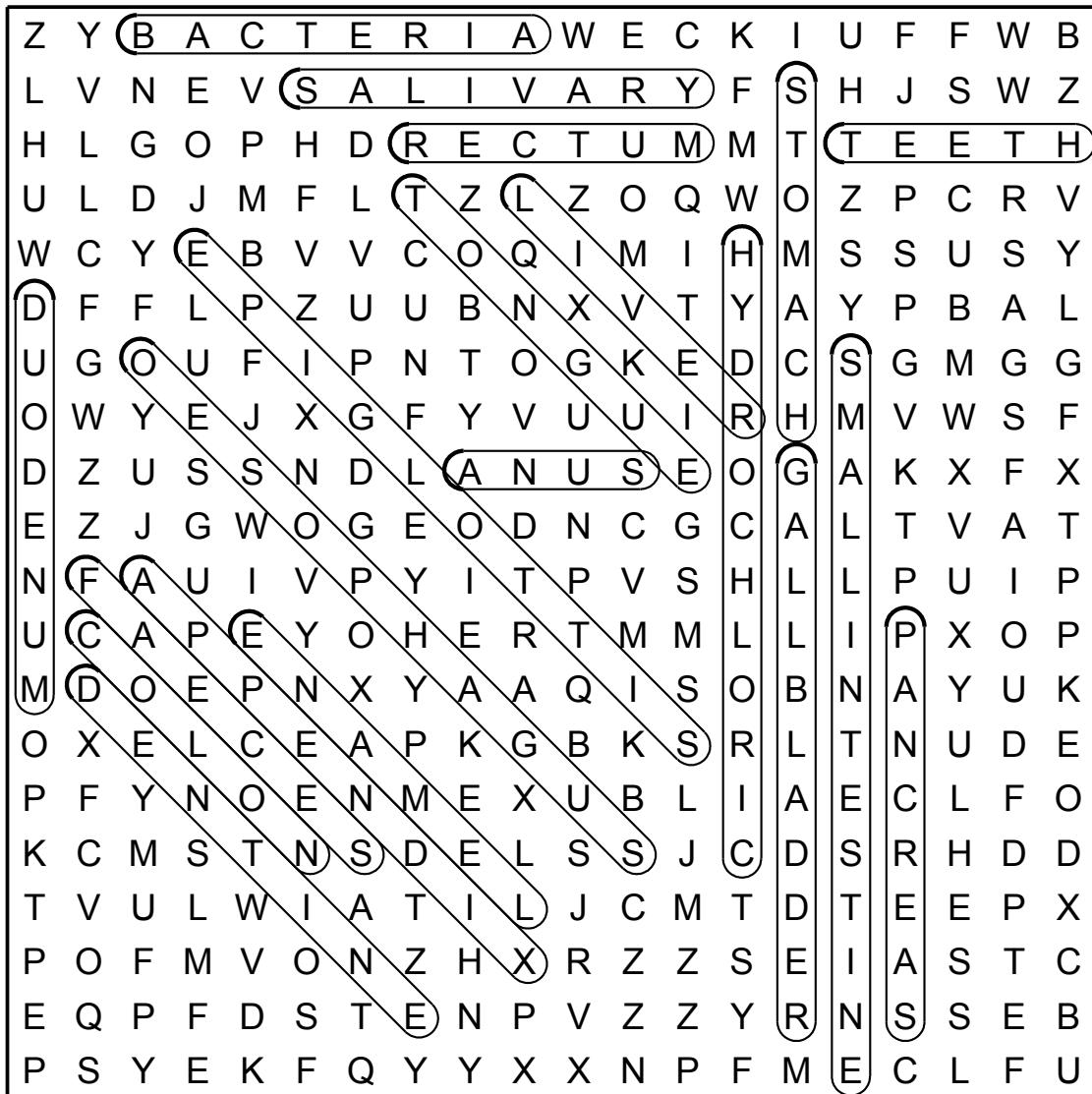
Across

2. These cut and crush food in the mouth
4. Type of glands found in the mouth
6. The tube between the mouth and the stomach
9. The faeces is held here until it is excreted
10. Scientific name for poo
12. Produces bile and many enzymes
14. Water is absorbed from the waste food in this organ (5,9)
16. This stops food going down the windpipe
17. A dead end tube where the small and large intestines join; can become infected and be removed
19. This stores bile made by the liver (4,7)
20. Can detect some poisons - the organ of taste

Down

1. Type of acid found in the stomach
3. The hard outer layer of teeth
5. The softer substance found inside teeth
7. At the end of the rectum, this controls when waste food is excreted
8. 6m in humans - where most nutrients are absorbed into the blood stream (5,9)
11. There are more of these in your digestive tract than there are people on this earth
13. A bag like organ - in adults 25cm long which can hold 1 litre of food
15. Produces insulin which controls sugar in the blood
18. The first section of the small intestine - about 30cm long

The Digestive System



- | | | | |
|----------|-----------------|------------|--------------|
| stomach | rectum | anus | oesophagus |
| salivary | liver | pancreas | hydrochloric |
| tongue | teeth | faeces | gall bladder |
| colon | small intestine | appendix | enamel |
| dentine | bacteria | epiglottis | duodenum |